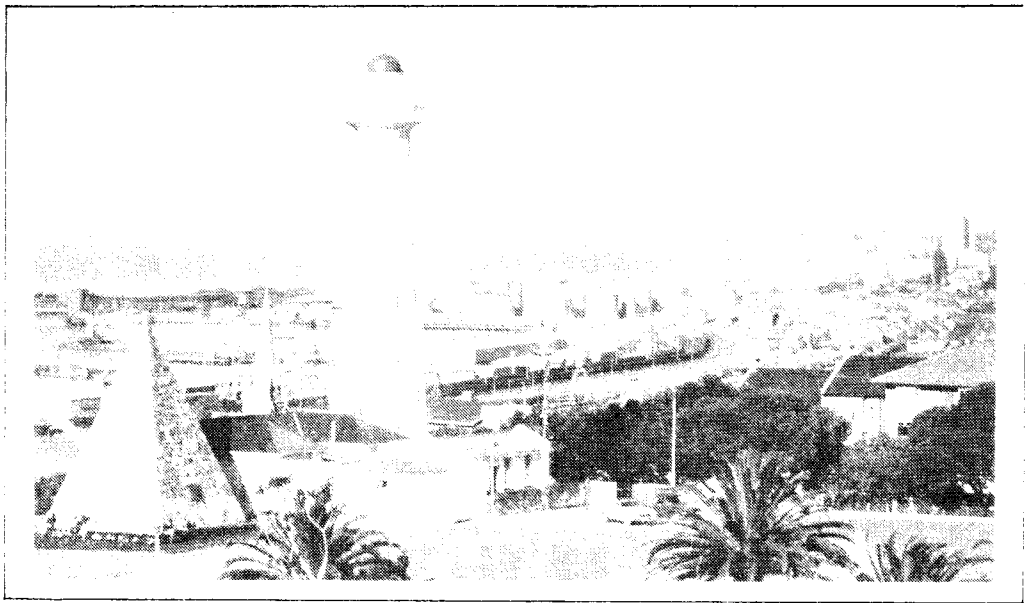




Q S X P E



THIS NEWSLETTER IS PUBLISHED BY THE
PORT ELIZABETH BRANCH OF THE SOUTH
AFRICAN RADIO LEAGUE.

P.O. BOX 10402
LINTON GRANGE
6015

04 / 89 :

P O R T E L I Z A B E T H B R A N C H
COMMITTEE

CHAIRMAN	Marge Weller	ZS2OB	30-4597
VICE CHAIRMAN	Brian Weller	ZS2AB	30-3498
SECRETARY	Dick Schonborn	ZS2RS	55-2244
TREASURER	Colin Robertson	ZS2CTR	30-0570
RALLIES/SOCIAL	Beavan Gwilt	ZS2RL	30-6968
SPECIAL EVENTS	Dick Schonborn	ZS2RS	55-2244
AWARDS	Bill Hodges	ZR2AAN	51-2580
MEMBERS	Lynne Crothall	ZS2MM	35-4671
HAMNET	Al Akers	ZS2U	30-2983
EDITOR - QSX-PE	Marge Weller	ZS2OB	30-4597
REPEATER WORKING			
GROUP - CHAIRMAN	Trevor Scarr	ZS2AE	32-1746
LIBRARIAN	Colin Ashwell	ZS2AO	31-2471

BULLETIN ROSTER

DATE	COMPILER	40m NET	2m NET
23 April	Lynne ZS2MM	ZS2MM	
7 May	Al ZS2U	ZS2U	
14 May	Marge ZS2OB	ZS2OB	
21 May	Brian ZS2AB	ZS2AB	

SUNDAY BULLETIN INFORMATION

Primary Frequencies for bulletins at approximately 08.40a.m.
H.F. 7098 kHz in 40 metre band. VHF 145,650 MHz - Town Repeater

BULLETIN UPDATE

7.30p.m. - 3695 kHz in 80 metre band - relay on 145,775 MHz
with possible relay on 51,400 MHz - incorporating VHF news.

BRANCH V.H.F. SERVICES PROVIDED

Town Repeater (P.E. Central)	145,050 / 145,650 MHz
Grahamstown Repeater	145,150 / 145,750 MHz
Ladys Slipper Repeater	145,100 / 145,700 MHz
Cockscomb Repeater	145,000 / 145,600 MHz
Beacon (Cw. Id ZS2PE)	144,910 MHz
University Repeater	145,175 / 145,775 MHz
6 meter beacon (ZS2SIX Cw Id)	50,005 MHz
Kareedouw Repeater	145,075 / 145,675 MHz

***** WE LIKE BEING YOUR BRANCH *****

NOTICE OF MEETING

Members are reminded that the monthly general meeting of the Branch will take place at St. Martins Church, Kabega Park on Friday 21st April at 8.15p.m. Ken Victor ZS20C will be giving a talk on Civil Defence with particular emphasis on Hamnet.

THIS AND THAT

WELCOME

A warm welcome to Fred Bonthuys ZS2EQ who has rejoined as a member of the Branch. Fred has returned to the Eastern Cape and is settling in Grahamstown with his family when he finds a suitable QTH. We wish you a long and happy association with the Branch, Fred.

SPECIAL OFFER

To commemorate Marconi Day, it was decided at the League A.G.M. that a special offer be made to new joining members. They may join during April, May and June without having to pay the Joining Fee and those three months will be free, so that their subs will be paid up until June 30 1990. See if there is anyone you can enrol with the special offer.

1989/1990 SUBSCRIPTIONS

The new subs are as follows:

		H.Q. Share
Ordinary member	R50	R35
Spouse	R15	R10
Student	R30	R23
Pensioner	R26	R21
Incapacitated	R26	R21

As usual, the Branch will be offering extended payments of up to four months. It would be appreciated, however, if the share for H.Q. could be paid in either the first or two payments so that this may be forwarded to H.Q. to keep records up to date.

THANKS

To Basil ZS2PG for his donation of books to the Branch. They are mostly QST and Radio ZS. The library 'gaps' will be filled and the balance offered to members for branch funds.

MINUTES OF GENERAL MEETING HELD 18TH MARCH, 1989 AT KABEGA SCOUT HALL. FIRST MEETING OF COMBINED PORT ELIZABETH/ALGOA BRANCHES.

Present: More than 50 members and visitors.

Apologies: ZS2s NU, MC, CM, FM, LW, EQ, SZ, RG, G, DT, and BRs Z AAN and DN.

The Chairman welcomed all present including the ladies. It was hoped that the ladies would be seen more often. A message of congratulations and good wishes for the future of the combined branches from the President of the League was passed on to the meeting.

Minutes: The Minutes of the previous meeting having been published in QSX-PE were taken as read, proposed by Colin ZS2CTR and seconded by ZS2WG.

Arising: The Chairman thanked all those who had contributed articles for Radio ZS on such short notice.

On 8/9th April, a Caravan rally will take place at Sea Acres. It was hoped to see more caravans in view of the fact that it was in town.

The Marconi Day Exhibition was going ahead as planned.

Thanks were extended to Lynne ZS2MM, Julian ZS2AAV, Andrew ZS2G, Garth ZS2HB and Lionel ZP2AAC for their help in the setting up of the station at the Ankervas Primary School. Lynne informed the meeting of the days happenings.

Correspondence: Several Branch newsletters and Council Minutes.

Finance: Colin ZS2CTR tabled the expenses and income for the past month. Lynne asked about the funds to be transferred from the Algoa Branch. This had not yet been done.

General: The Kareedown repeater is apparently on the air, but initial tests were not satisfactory and more work would be done to rectify this.

Lionel ZS2DD reported that the HF frequency of the Bulletin Board had been changed and a new crystal would have to be ordered.

At this point, Trevor ZS2AE, Toff ZS2AAW and Julie arrived, having been to Plettenberg Bay to test sites for the 2 m link to George. Trevor said that he was unable to access Kareedown Repeater from Port Elizabeth.

Fred ZS2JS asked about the possibility of a combined bulletin, i.e. HQ and ZS6TJ. The Chairman felt that Johannesburg were loath to pass on info to HQ and wanted their bulletin to be bigger and better!

All members were asked to get more involved in all functions. This lightened the load for the regulars who usually did the work. Members were asked to enrol their wives as Branch members and an appeal was made for the dates of wives birthdays and also anniversary dates.

The Chairman thanked Ron ZS2MF for arranging the use of the Hall and Beavan ZS2RL and Mel for arranging the catering etc.

Raphy ZS2SP asked about the possibility of special insurance to cover the loss of equipment through theft. The replacement cost had escalated tremendously. The cover planned by the Johannesburg Branch was mentioned. Fred ZS2JS said that his equipment was covered by his homeowners policy. The League had Third Party cover which was included in annual subs.

Owen ZS2HZ who had resigned as Secretary due to his impending move overseas, was thanked for his work during the past time he had been with the Branch.

Al ZS2U said that the VHF contest was taking place at the moment.

At this point the meeting was closed, and a very pleasant social gathering took place. Many thanks to those who had done the arranging and to the wives and others who had brought such a splendid selection of eats.

sgd: M.T. Weller ZS2OB
Chairman

Sgd: R.W. Schonborn ZS2RS
Secretary



Instant Printing

9 ST. PATRICK'S ROAD
PORT ELIZABETH
5001



TELEPHONE 22614

FOR ALL YOUR COMMERCIAL PRINTING REQUIREMENTS

TRY US FOR YOUR QSL CARDS!

HAMNET NEWS.

Much has transpired over the past few months affecting Hamnet. As past Regional Co-ordinator for East Cape, I wish to inform Hamnet members of this. On Sunday 18th December, 1988, the following announcement was made over the Headquarters Bulletin.

"Hamnet. As everyone knows, for many years, Hamnet affairs have been regulated by a national co-ordinator for Hamnet. In the formative years of the organisation, the National Co-ordinator fulfilled and admirably performed a vital function in getting Hamnet recognised by the authorities and, in conjunction with the Regional Co-ordinators and branch executives, a standardised and efficient body of radio amateurs has evolved.

Recently the National Co-ordinator, O.M. Francois Botha ZS6BUU has indicated that he wished to resign as National Co-ordinator. This matter was discussed by Council and his resignation has been accepted. Council also felt that by the very nature of the activities carried out by Hamnet it would be far better for these Hamnet activities to be conducted at local Branch level. It is felt that each area's civil defence runs as a separate entity and that the branches, individually, could complement the civil defence organisation locally more effectively. Consequently Branches are advised that they should, as from 1st January 1989, appoint a Hamnet Liaison officer in the Branch and encourage the regular testing of equipment under simulated emergency situations and also run local exercises. But please note that items of a national nature and the liaison between national authorities will and must still be channelled through Headquarters."

This came as rather a surprise as, apparently, the Regional Co-ordinators and their committees were not even afforded an opportunity for discussion on the matter, not in the East Cape anyway. It would appear that dissatisfaction was expressed from other areas to HQ. The past East Cape Hamnet committee members held a meeting during March to discuss this new ruling and agreed unanimously that it was not satisfactory. As a result of the discussions, a letter was written to the Councillor for Emergency Services with certain recommendations for his consideration. At the League A.G.M. a motion to move HQ from Cape Town to the Transvaal was carried. As a result of all this, it would appear that it will be some time before action, if any, will be taken on this matter. The present situation therefore is as follows:

The Port Elizabeth Branch has appointed me as the Branch Hamnet Liaison officer. With the blessing of the Branch Committee, I have appointed a sub-committee to assist me with Hamnet activities. The members are Ken Victor ZS20C, Bud Voortman ZS2CA, Jack Moolman ZS2KU and Stoffel Carr ZS2C.

I wish to thank all Hamnet members who have assisted in various ways during my term as Regional Co-ordinator, particularly the Committee, Ken ZS20C, Bud ZS2CA, Jack ZS2KU and George ZS2KG. As George is taking up a new post in East London shortly, he will not be in a position to serve on the sub-committee. We wish you well in your new post, George.

I would like still to keep in touch with Hamnet members in the East Cape as I feel this is in our own interest. Any comments, enquiries, information, etc will be welcome. Write to my home address or Box 10050, Linton Grange, 6015.

A.F.A. Akers, ZS2U. Branch Hamnet Liaison Officer.

FOR SALE

1. Crystal for PRC 261, transmit and receive on 51,400. R10.50.
2. Radio Amateurs World Atlas printed by Radio Amateur Callbook Inc. R20. Contact Al Akers ZS2U, phone 302983 (home) or 531-1141 (work).

A new name for old people who don't want to be called senior citizens:
seasoned citizens.

In this day and age, it takes nerves of steel just to be a neurotic.

Car sickness is the feeling you get every month when the payment is due.

A customs official, examining a suitcase in which a woman had hidden an undeclared bottle of perfume, let his hand roam to the danger zone. Her little daughter squealed, clapping her hands, "Oh, Mommy, he's getting warm, isn't he?"

"It says the box must be RF tight, not you've got to be tight!"



THE HOMEBREW SLIM JIM.

By Dick Hardie ZS6AML

During my many years as a caravanning ZS2, a lot of time was spent on erecting and testing homebrew antennas.

The Slim Jim antenna described in this article is not new. To my knowledge, credit for its invention must go to G2BCX, otherwise well known as Fred Judd, a foremost authority and certainly a prolific writer of articles describing a multitude of different antennas and other amateur radio topics.

The beauty of the Slim Jim is that it can be cheaply homebrewed to yield a weatherproof, reliable and cost effective antenna. Other attributes of the Slim Jim antenna are:

1. Low angle of radiation ensures superb performance over long distances.
2. Absence of ground plane allows freedom from bulky or projecting radials.
3. High efficiency.
4. Low wind loading.
5. Unobtrusive appearance.
6. Easily portable.
7. Weatherproof if installed inside a capped PVC pipe.

It is the intention of this article to share with the reader some of the ideas used by the writer, in the construction of a homebrew Slim Jim.

Material. The material used is known as insulated TV earthing lead. It consists of 1/4 inch (6mm) solid round annealed aluminium rod which is covered with a thin layer of white PVC material. It is easily bent to shape. The grey 40mm diameter PVC pipe into which the finished antenna is installed is available in 4m lengths from plumbing suppliers or hardware outlets.

Dimensions. The dimensions shown in sketch A are applicable to the 2 metre wavelength (145MHz). The dimensions may be scaled to other frequencies (see sketch of authors 70cm version). The total length of aluminium rod material required is 3 metres.

Bending. It is suggested that the antenna be drawn out in full scale on a suitable surface (garage floor)! This will allow accurate compliance with the specified dimensions. The U-shaped

bends should be made around a suitable former. The writer used an old torch battery (not penlight or torchcell, but the size 935 cell which is inbetween the two). The separation between the parallel sections may be maintained by taping a dry wire bottle cork between the sections.

Attachment of cable. There are many methods for attaching the coaxial cable lead to the antenna. As it will probably be necessary to vary the points of attachment (in order to achieve the best SWR), use of the metal inserts from a sufficiently large connector block or terminal block are ideal.

An alternative method is to drill into the aluminium rod at the specified position, insert small self-tapping screws and solder the coaxial connections onto the heads of the self-tapping screws. The only disadvantage of this method is the difficulty of varying the tapping position to improve the SWR, but use of temporary crocodile clips would overcome this problem.

Weatherproofing the Slim Jim. The only aspect of this article which is "new" is the weatherproofing of the Slim Jim. As this is probably the single most important contributor to the long term reliability and maintenance free aspects of this antenna, the author used a length of readily available 40mm diameter grey PVC plumbers pipe as the covering of the Slim Jim.

The top seal may be made in a variety of ways, the easiest of which and the one used by the author is use of an electric cable end sealing cap. These are available as either a heat shrink type or as a flexible PVC type which is glued onto the end of electric cable to prevent moisture ingress during storage.

Standing Wave ratio. As far as the adjustment of SWR is concerned, there are two distinctly different schools of thought. Followers of the 'correct' school of thought, believe that the antenna should be constructed to theoretical dimensions, thereafter the SWR should be measured at the antenna terminals. Any adjustment must be made to the antenna to correct the SWR at the antenna.

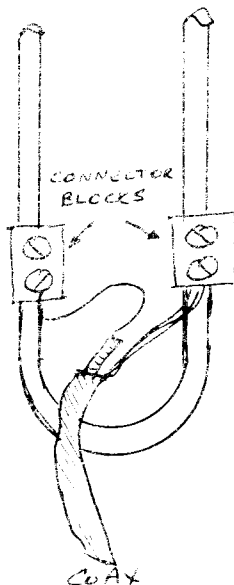
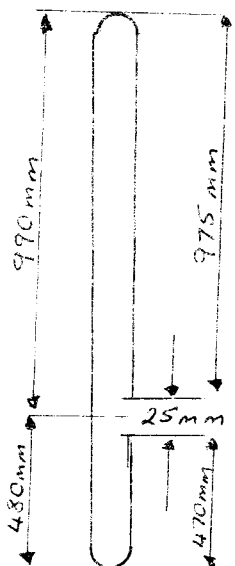
The purists are then correct in saying that if the SWR of this (single frequency) antenna is correct, i.e. that the antenna impedance is 50 ohm resistive, and if the coaxial cable is of the 50 ohm type, then the impedance (and hence SWR) will be correct at any point along the coaxial cable and the cable may

be cut to any desired length for connection to the transceiver.

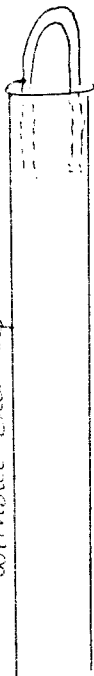
The authors opinion is, however, not quite so pure and may be summarized as follows. With the full length of coaxial cable connected between the antenna and the transceiver and with the SWR meter at the transceiver side, position the antenna where it is clear of other conductors and the ground. Set the feed point to a position where the lowest SWR is obtained. The SWR measurement must be carried out while the antenna is inside the grey PVC water pipe as the presence of the pipe changes the SWR compared to the reading obtained when the antenna is not inside the PVC pipe.

Mounting. For best results, the antenna should be mounted as high as practical and away from surrounding conductors and vegetation. The PVC pipe in which the antenna is installed may be longer than the antenna length. As the pipe is not very strong the length used will depend on local weather conditions. While living in Port Elizabeth, the author used a length of 2,5 metres with the antenna installed in the top 1,5 metre section.

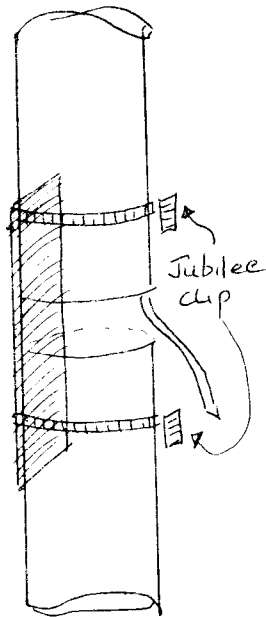
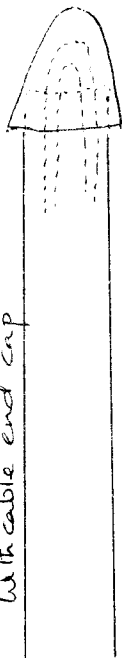
The PVC pipe may be joined to an aluminium or steel pipe by a variety of methods. In the authors case, by use of a piece of angle iron and two jubilee clips.



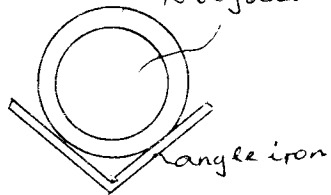
Without End Cap



With cable end cap

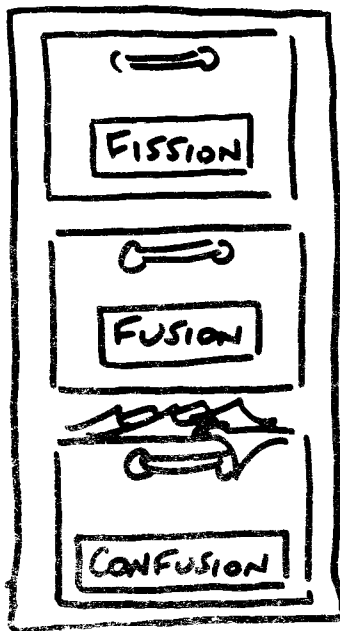


circular pipe to be joined



Howard Chandler Christy

"See it's almost time for you and your hair set to renew your marriage license."





PETERSEN & SMITHIES

THE Engine Builders

Specialists in Veteran car engines.

3 HANCOCK STREET, NORTH END

☎ 041-543669/0

ASK FOR LEO SMITHIES

HENROSE PRODUCTS (PTY.) LTD (EDMS) BPK

MANUFACTURERS OF PLASTIC BAGS
PRODUCERS OF FRUIT JUICES
"ORANG-U-TANG"
AND "LEKKA LIKS" FROZEN SUCKERS

VERVAARDIGERS VAN PLASTIEKSAKKE
VERVAARDIGERS VAN VRUGTE SAPPE
"ORANG-U-TANG" EN
"LEKKA LIKS" VERVRIESTE YSBLOKKE

TEL. 546470

5-7 EDGAR LANE

NORTH END

PORT ELIZABETH, 6001

COMPUTER TECHNICAL ENGINEERING

Division of Slimwell Slimming Club CC

POSTAL ADDRESS

P.O. Box 10317

Linton Grange
6015.

REGISTERED OFFICE

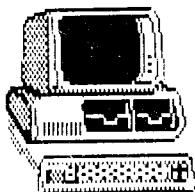
25 Olive Schreiner Avenue
van der Stel

PORT ELIZABETH.

Telephone: (041) 30-4597

(Answering Machine available)

Registration No.
CK88/13270/23





E.P. MUFFLERS

EXHAUST FITTING AND PIPE BENDING
SPECIALISTS AND MANUFACTURERS

ALSO:
TOWBARS
BATTERIES
SHOCK
ABSORBERS



MILD STEEL
FULLY
GUARANTEED

STAINLESS
STEEL
LIFETIME
GUARANTEE

ALSO IN
GRAHAMSTOWN
(0467) **28448**
(CALL-WISE STREET)

545420

29 EMBASSY STREET, NORTH END, P.E.

BAMBOO SNACKS

For delicious Chinese Take-aways
in the Western Suburbs.

OLD CAPE ROAD
KABEGA PARK, PORT ELIZABETH

PHONE 30-4390

Express Number plates & 'SIGNS'

FLEKTI-PLATE

Tel 54 2834 / 54 1501 / 54 1652

23a De Villiers St

PO Box 2587

Port Elizabeth

North End 6056